

An aerial photograph of a large estate in Hampshire, England. The landscape is a mix of lush green fields, dense woodlands, and a large body of water in the upper right. A large, historic stone building is visible in the middle ground, surrounded by trees. A modern building with a swimming pool is located in the lower left. The overall scene is peaceful and scenic.

AVINGTON  
HAMPSHIRE

CONNECT. INSPIRE. ACHIEVE.

Corporate & Events





# WHERE CORPORATE MEETS CALM

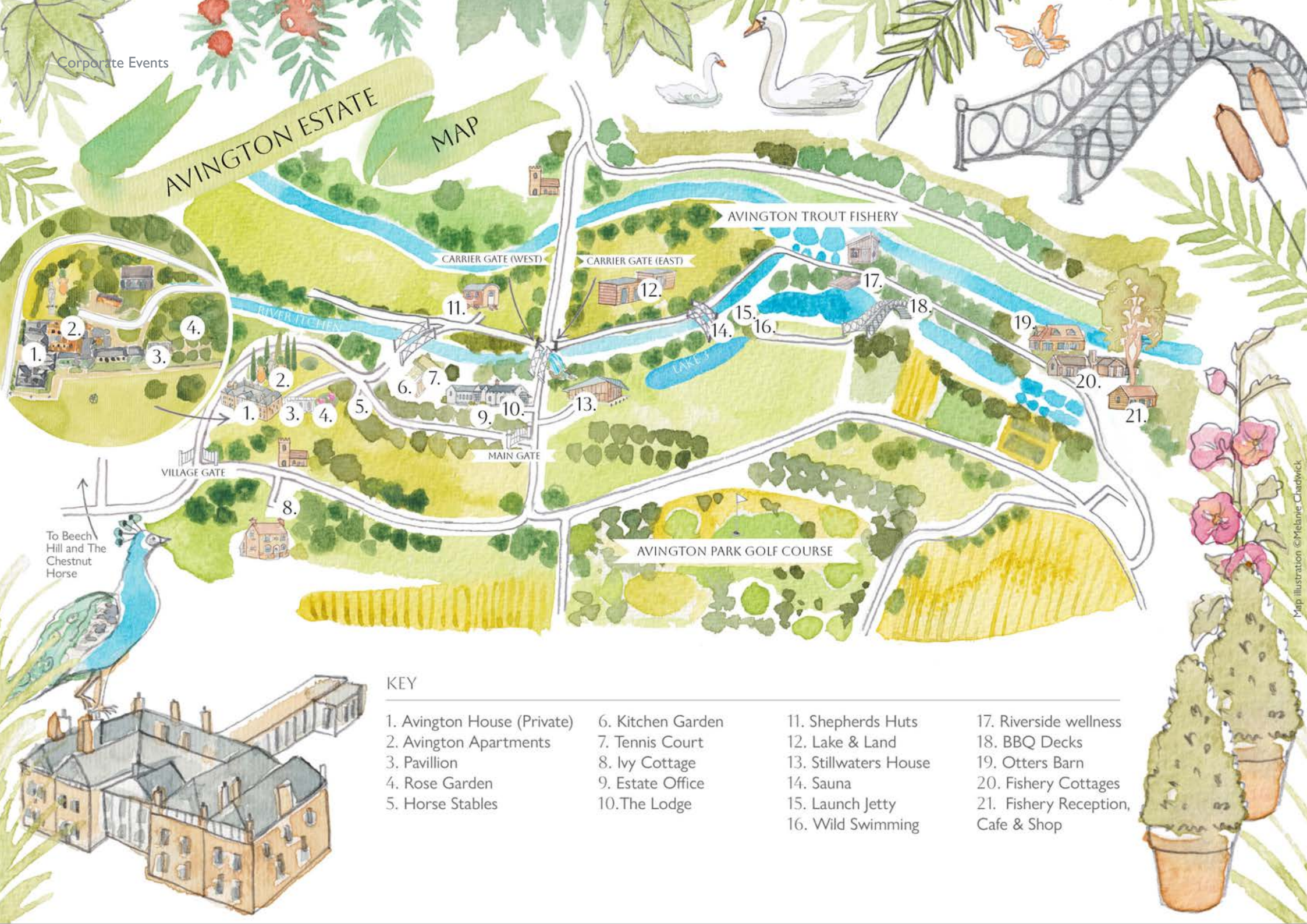
**Connect, recharge, and celebrate at Avington.**

Avington provides a stunning backdrop for team-building retreats, wellness getaways, corporate events, product launches, and private celebrations.

With a blend of natural beauty and thoughtfully designed spaces, it's the ideal setting to inspire fresh thinking and meaningful connections.



# AVINGTON ESTATE MAP



## KEY

1. Avington House (Private)
2. Avington Apartments
3. Pavillion
4. Rose Garden
5. Horse Stables

6. Kitchen Garden
7. Tennis Court
8. Ivy Cottage
9. Estate Office
10. The Lodge

11. Shepherds Huts
12. Lake & Land
13. Stillwaters House
14. Sauna
15. Launch Jetty
16. Wild Swimming

17. Riverside wellness
18. BBQ Decks
19. Otters Barn
20. Fishery Cottages
21. Fishery Reception, Cafe & Shop



## 1.5 HOURS FROM LONDON

Located in the heart of Hampshire, we're conveniently accessible from major routes.

Just a short drive from the M3 or under an hour by train from London, finding your way to our idyllic retreat is a stress-free experience.



1.5 hours by car  
from London



1 hour from  
Heathrow



Under 1 hour by  
train from London

Avington Estate, Avington Lane, Avington  
Lodge, Winchester SO21 1DB



# EXPERIENCE CORPORATE EVENTS AT AVINGTON



## MEETINGS

Avington provides a range of inspiring meeting spaces set within peaceful, natural surroundings - ideal for focused work, strategic planning, and creative collaboration.

From light-filled boardrooms at Otters Barn to relaxed breakout areas at the Fishery Café, and private dining at The Chestnut Horse, each space is thoughtfully designed to foster productivity and connection. With a selection of stylish two-to five-bedroom houses, cosy cabins, and suites available for overnight stays, Avington offers the perfect balance of work and retreat in a setting that encourages fresh thinking and meaningful dialogue.



# CELEBRATIONS

From festive gatherings to sun-soaked summer parties, Avington is the perfect setting for unforgettable celebrations all year round.

Whether you're toasting the season with a candlelit feast or hosting a garden party surrounded by wildflowers and woodland, the estate offers a magical backdrop for every occasion. With beautiful on-site accommodation and a range of outdoor activities, your celebration can flow effortlessly from day to night - filled with joy, connection, and countryside charm.





## TEAM BUILDING AWAY DAYS

Strengthen bonds and build meaningful connections within your team. Step away from the everyday and into nature as you and your colleagues engage in thoughtful team-building activities designed to foster collaboration, trust, and a renewed sense of unity - all set against the serene backdrop of the countryside.





## RETREATS & WELLNESS

Avington offers a unique opportunity for teams and leaders to step away from the pressures of the workplace and reconnect - with nature, with purpose, and with each other.

Set within tranquil countryside and ancient woodlands, our corporate wellness experiences are designed to support high performance through restoration, reflection, and meaningful connection. Science-backed, longevity - focused programmes help reduce stress, boost immunity, and enhance mental clarity - empowering your team to thrive, both personally and professionally.

Engage in forest bathing to reset the nervous system, take part in leadership and creativity workshops, and build trust through shared challenges in nature. Move naturally through guided walks, garden workouts, or wild swims, and fuel your body with nourishing, seasonal meals.

At Avington, your team will find the space to reset, refocus, and return with renewed energy, stronger collaboration, and a shared sense of purpose.





Corporate Events

# EVENT SPACES AT AVINGTON

Elevate your corporate gathering at Avington. With versatile spaces, activities, and accommodation, we can deliver your vision. Whether it's a board meeting, team building, strategic retreat, or product launch, we'll make sure the stage is set for a distinct, impactful get-together.











## OTTERS BARN

Otters Barn offers a serene lakeside setting, bringing the outdoors inside with bi-folding doors, making it perfect for breath-taking corporate events. It's ideal for meetings as well as private dining and enhanced by its proximity to the Fishery Cafe, which serves as an excellent lounge or breakout space.

### Capacities:

BOARDROOM 32 | CABARET 30 | BANQUETING 40  
THEATRE 40 | U-SHAPE 25

## FEATURES

- Outdoor Decking Area
- Breakout Space in Fishery Cafe
- Highspeed Wi-Fi
- Nearby Lakeside Accommodation
- 65" TV Screen
- Flipchart & Pens
- Catering Kitchen & Cloakrooms
- Disabled Access
- Complimentary Parking



OTTERS BARN  
FLOORPLAN





Corporate Events

## LIBRARY

SUBJECT TO REQUEST ONLY

Experience the distinguished charm of the historic Library at Avington, where oak panelling and floor-to-ceiling books create a grand country ambiance. This exquisite space, with doors opening onto lush lawns, is perfect for intimate dining, celebratory gatherings, or atmospheric meetings.

### Capacities:

THEATRE 100 | BANQUET 70 | CABARET 35  
CLASSROOM 24 | BOARDROOM 36 | U-SHAPE 25



## FEATURES

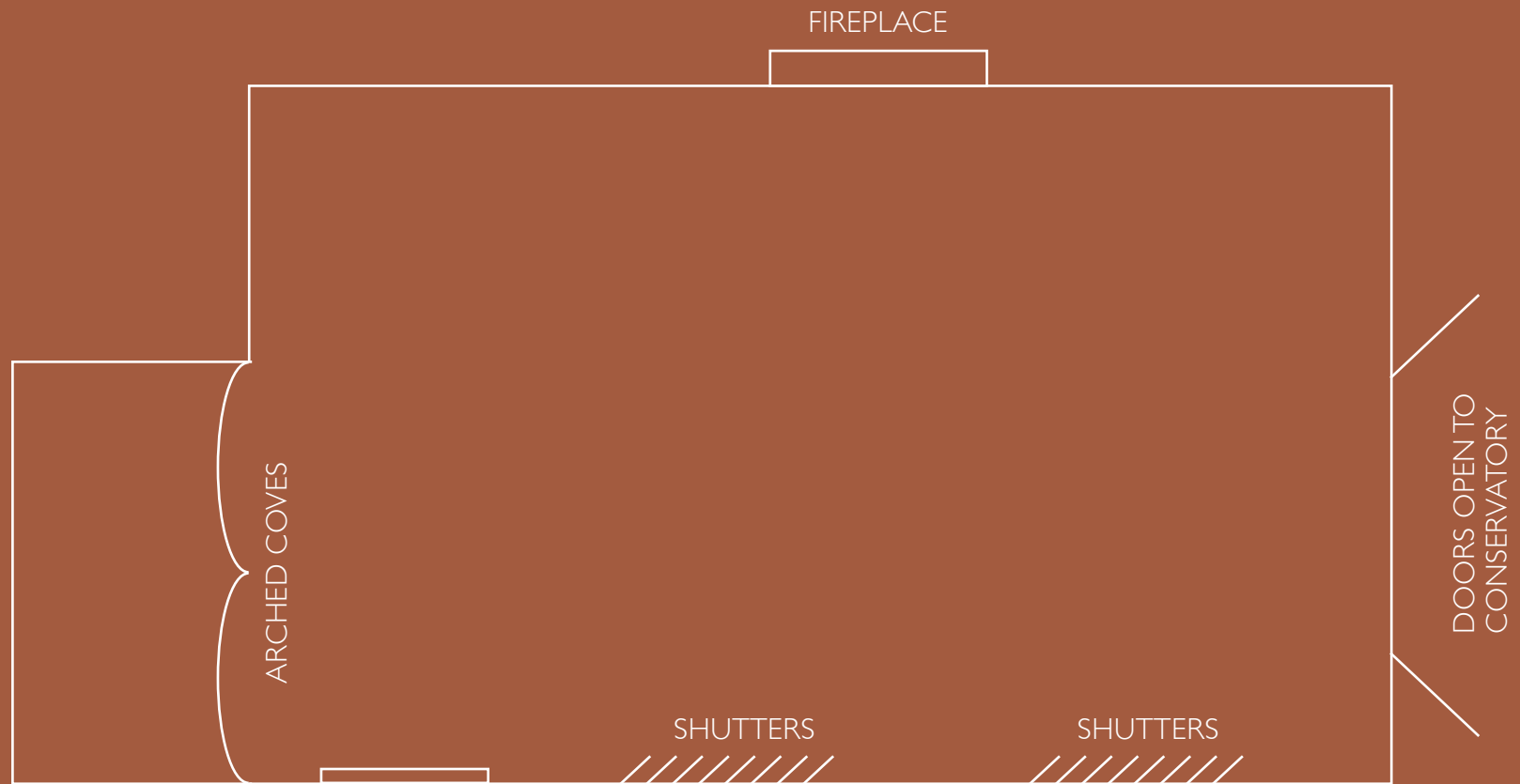
Historic Doors Open to Lawns  
Adjoins The Orangery  
Built in Sound System  
Day & Night Design Concepts  
Highspeed Wi-Fi  
Historic Accommodation in the House  
65" TV Screen  
Catering Kitchen & Cloakrooms  
Flipchart & Pens  
Disabled Access  
Complimentary Parking





# LIBRARY

## FLOORPLAN







## ORANGERY

SUBJECT TO REQUEST ONLY

The historic Orangery Conservatory, a grand addition to Avington Park House by Sir John Shelley in the 19th century, captivates with its stunning architecture and majestic ambiance. Accommodating up to 180 guests, the space is bathed in amazing natural light, creating a sublime setting.

### Capacities:

THEATRE 100 | BANQUET 30

## FEATURES

Huge Ornate Doors Open to the South Lawn

Adjoins Two Decorative Conservatories

Private Bar Available

Highspeed Wi-Fi

Nearby Historic Accommodation

65" TV Screen

Flipchart & Pens

Catering Kitchen & Cloakrooms

Disabled Access

Complimentary Parking







## STILLWATERS

Stillwaters House at Avington Estate offers an exceptional setting for corporate meetings and strategic planning sessions. Its modern boardroom, featuring floor-to-ceiling windows, provides an inspiring environment with panoramic views of the tranquil Stillwaters Lake and surrounding countryside. Equipped with high-speed Wi-Fi and state-of-the-art amenities, the space ensures seamless connectivity and productivity. The serene ambiance, combined with luxurious accommodations and on-site wellness facilities, fosters focus and creativity, making it an ideal choice for executive retreats and team gatherings.

Capacities:  
BOARDROOM 14

## FEATURES

Infinity Pool

Swedish Hot Tub

Gym

Sunken Firepit

Private Access to Natural Lake

Hightspeed Wi-Fi

Multiple Screens Available

Multiple Breakout Spaces

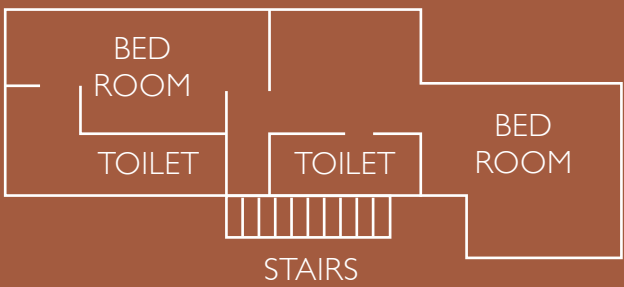
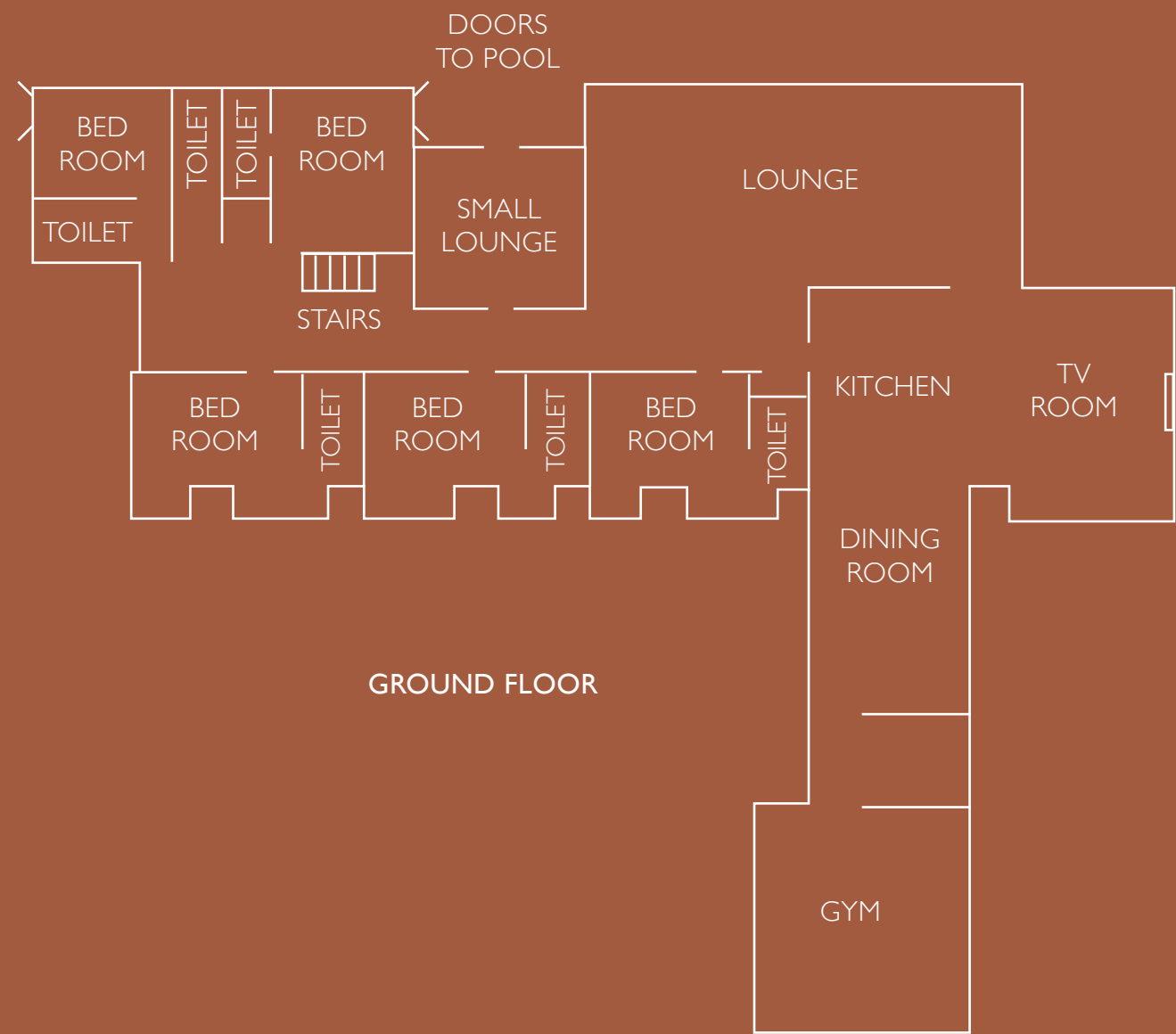
Utility Room

BBQ and Outdoor Dining Area





STILLWATERS  
FLOORPLAN





Corporate Events



## FISHERY CAFÉ

The Avington Fishery Café offers a relaxed, scenic setting that's perfect for breakout sessions and brainstorming. Overlooking the tranquil lakes, it provides a refreshing change of pace - ideal for sparking creativity, encouraging open conversation, and fostering fresh ideas in a calm, inspiring environment.

### Capacities:

REGISTRATION/BREAKOUT SPACE (INFORMAL) 30

BUFFET LUNCH 20

## FEATURES

Bifold Doors

Outside Decking Overlooking Fishery

Complimentary Park

Kitchen and Bar Area

Highspeed Wi-Fi

Screen provided if required







Corporate Events

## ESTATE PUB

5 MINUTES FROM AVINGTON

Avington's Estate pub, The Chestnut Horse, offers a warm, character-filled setting just moments from the estate. With its cosy interiors, seasonal menus, and private dining options, it's an ideal venue for relaxed corporate lunches, informal meetings, or post-retreat gatherings - blending countryside charm with thoughtful hospitality.

### Capacities:

TACK ROOM 16 | THE CONSERVATORY 40

## FEATURES

Private Dining Room available

Courtyard

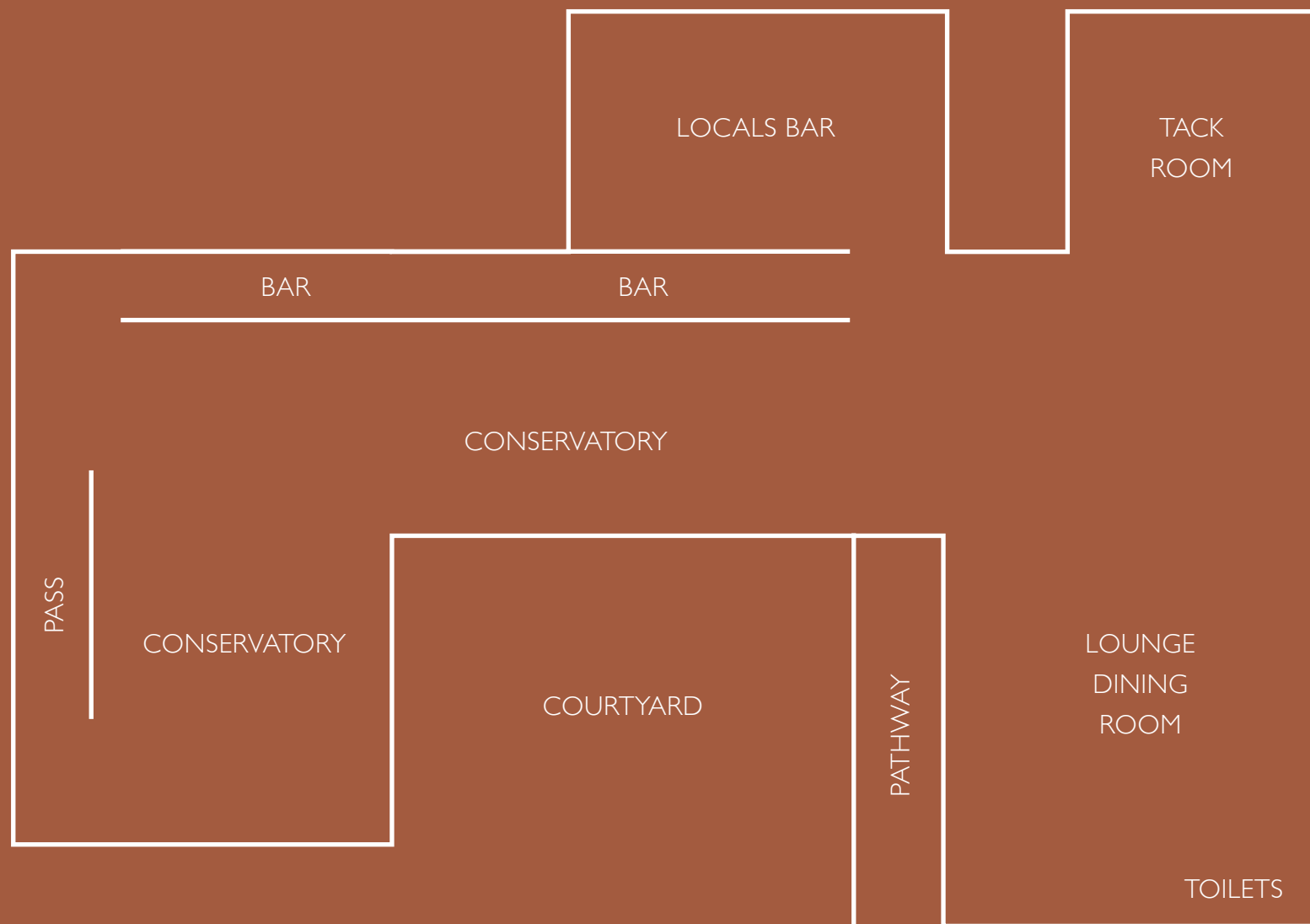
Screen available





# THE CHESTNUT HORSE

## FLOORPLAN





# PACKAGES AT AVINGTON

## DAY DELEGATE PACKAGE

Immerse yourself in the serene beauty of Avington for the day.

### PACKAGE INCLUDES

- Room Hire
- Tea & Coffee
- Working Buffet Lunch
- Two Refreshment Breaks
- 65" TV, Flipchart & Pens
- Complimentary Wi-Fi & Parking

---

**PRICE FROM £110 PER PERSON**





## 24-HOUR PACKAGE

Fully immerse yourself in the serene beauty of Avington, with inclusive overnight accommodation.

### PACKAGE INCLUDES

- Room Hire
- Tea & Coffee
- Working Buffet Lunch
- Two Refreshment Breaks
- 65" TV, Flipchart & Pens
- Complimentary Wi-Fi & Parking
- Estate Accommodation & Breakfast Offering
- Three Course Dinner at The Chestnut Horse Pub

---

PRICE FROM £375 PER PERSON



## FISHERY PACKAGE

### PACKAGE INCLUDES

- Instructed fly fishing session
- Tackle, rods and flies provided
- Welcome Breakfast Baps with Tea & Coffee
- 2 course Buffet Lunch
- Unlimited soft drinks throughout your event
- Exclusive use of Otters Barn

---

CATCH AND RELEASE TICKET £271 + VAT PER PERSON

2 - FISH TICKET £293 + VAT PER PERSON

3 - FISH TICKET £300 + VAT PER PERSON





# ACCOMMODATION AT AVINGTON LAKES

Whether you opt for a tranquil lakeside retreat at Avington Lakes, the character of a charming village cottage, or the welcoming comfort of a room at The Chestnut Horse, every stay at Avington invites you to unwind, explore, and enjoy a truly memorable experience.





## ACCOMMODATION

### 27 EN SUITE BEDROOMS SPANNING THE LAKES

Overlooking the tranquil lakes, our range of accommodation at Avington Lakes offers something for every stay - from contemporary houses such as Stillwaters, to the characterful Otters Loft, cosy lakeside cabins and rustic Shepherds Huts. Blending comfort with the beauty of the outdoors, each space provides a peaceful retreat in this idyllic setting.



## OUR PROPERTIES

Stillwaters House | 14

Clearwaters House | 6

Calmwaters House | 6

Otters Loft | 6

Shepherds Huts | 3 x 2

Clearwaters Cabin | 4

Calmwaters Cabin | 2

Lodge Cabin | 4

The Lodge | 6



## STILLWATERS

Welcome to Stillwaters House, the crown jewel of Avington Lakes. Nestled on the edge of crystal-clear chalk lakes, this luxurious retreat offers stunning views of the surrounding countryside. With seven spacious ensuite bedrooms, it's ideal for self-catering family holidays, group stays, and corporate getaways.

Stillwaters House blends comfort and luxury, enhancing your stay with elegantly appointed spaces, enriching experiences, and serene vistas. Each aspect of the house promotes relaxation, recreation, and a deep connection with nature.







## CLEARWATERS & CALMWATERS HOUSE


Set beside the tranquil Avington Lakes, Calmwaters and Clearwaters Houses offer elegant, light-filled spaces designed for rest, reconnection, and inspiration. Ideal for group stays, retreats, or intimate gatherings, each house blends contemporary comfort with the calming presence of nature - inviting you to relax, recharge, and make meaningful memories in a truly peaceful setting.









A photograph of a modern cabin interior. In the foreground, a wooden chair with a brown leather seat and backrest is positioned. To its left is a grey sofa with several cushions. A small wooden table holds a stack of books. To the right, a round wooden table is set with a glass and plates. A large window with light-colored curtains dominates the background, offering a view of a calm lake and lush green trees. A wooden deck and a red Adirondack chair are visible outside.

Corporate Events

## CLEARWATERS & CALMWATERS CABINS

Nestled on the edge of the serene Avington Lakes, Calmwaters and Clearwaters cabins offer a peaceful escape surrounded by nature. With minimalist design, cosy interiors, and uninterrupted views of the water, they provide the perfect setting to slow down, reconnect, and find stillness - whether you're here for quiet reflection or a creative reset.







## OTTERS LOFT

Otters Loft sits above Otters Barn and the River Itchen - offering a tranquil escape at Avington Lakes, accommodating up to six guests in three ensuite bedrooms. The property includes spacious living and dining areas and a well-equipped kitchen. Outside, a deck with seating and a fire pit overlooks the Itchen River carrier stream, making it an ideal spot for a peaceful getaway or family retreat.









## SHEPHERDS HUTS

Tucked away beside tranquil waters and whispering reeds, our Shepherds Huts offer a peaceful retreat into nature. Designed for rest and rejuvenation, each hut invites you to disconnect from the everyday and reconnect with the rhythms of the countryside.

Whether you're soaking in a wood-fired hot tub under the stars, enjoying a leisurely paddle on the lake, or simply listening to birdsong from your private deck, this is a place to slow down, breathe deeply, and restore your sense of well-being.









Corporate Events

# ADDITIONAL ESTATE ACCOMMODATION





## ACCOMMODATION

Additional accommodation includes the elegant Avington Park Apartments, the characterful Chestnut Horse pub rooms, and the charming Ivy Cottage in Avington Village - each offering comfort and unique style within the estate's idyllic surroundings..



## ADDITIONAL PROPERTIES

### AVINGTON PARK

- The Pavilion | 4
- Tudor Apartment | 10
- Elizabethan Apartment | 6
- Courtyard Apartment | 8
- Butlers Apartment | 2
- The Stables | 4

### THE CHESTNUT HORSE

- Pub Rooms | 4 x 2

### AVINGTON VILLAGE

- Ivy Cottage | 6



Corporate Events

# CATERING AT AVINGTON







## CATERING

At Avington, we work with our recommended caterers to create memorable corporate events tailored to your needs.

Otters Barn, our main event space at Avington offers space for private dining, cocktail making masterclasses and working buffet lunches, and a range of other possibilities too.

Or if you prefer to go offsite, our estate pub - The Chestnut Horse can accommodate group bookings.

Whatever your preference, our team will work closely with you and your chosen caterer to ensure a smooth and professional experience from start to finish.

## WE ALSO OFFER

Private Dining in the Library  
of the Main Estate House

Wild Dining Amongst the  
Landscape of Avington

BBQs and Firepit Cooking

Catch n' Cook from  
Avington Fishery

Forage and Cook with The Chef

Self-Catering Hampers





## DOWN THE LOCAL

Impress your guests with a wholesome catering experience from The Chestnut Horse, available for corporate events at Avington. Known for its modern British cuisine and locally sourced ingredients, The Chestnut Horse brings restaurant-quality dining to your business gathering - whether it's a strategy day, product launch, or executive retreat. With tailored menus, seamless service, and an emphasis on quality, The Chestnut Horse is perfect to make your event extra special.









Corporate Events

# ACTIVITIES AT AVINGTON







## ACTIVITIES

We have a wide range of experiences and activities to make any corporate event special. Whether you're looking for outdoor adventures or indulging in the tranquillity of nature, we have something to suit everyone.

### INCLUDED IN YOUR VISIT

- Cycling
- Wild Swimming
- Kayaks
- Sauna
- Tennis courts
- Paddle Boarding
- Row Boats
- Bird watching facilities
- Gym

### OPTIONAL EXTRAS

- Fishing
- Wellness Activities
- Foraging Cocktail Masterclass
- Jam Making
- Air Rifles





Corporate Events

# WELLNESS AT AVINGTON







## WELLNESS

Refresh the body and mind amid Hampshire's rolling landscapes. Embrace wild swimming and paddleboarding on the lakes or River Itchen, unwind in our serene sauna pod, and explore peaceful walking and cycling trails through countryside. For gentle movement, indulge in Pilates and holistic wellness sessions, all set within a natural sanctuary designed to inspire calm and rejuvenation.



## OUR ESTATE COMMITMENT

A nature-first approach to land, water and wildlife care at Avington.

### PLANTING & REWILDING

700 metres of native hedging - including hawthorn, blackthorn, hornbeam, hazel and privet - have been planted around the estate. These provide essential nesting spots for birds, food for wildlife, and shelter for grazing animals. This has been planted at a size that has an instant impact.

Over 800 trees and hedging plants have been planted across Avington. These trees improve soil health, reduce flooding and erosion, provide oxygen and improve air quality, and create vital food and habitats for local wildlife. Ash dieback has significantly affected the estate.

Where possible, we are replacing affected trees, while also leaving some deadwood in place to supply a wide range of wildlife with sources of food and shelter. As it breaks down, this also returns nutrients to the soil.

### NATURE CONSERVATION

Wild grasses and wildflower areas have been introduced across the estate. These improve access to pollen and shelter for Avington's local pollinators and insects, helping to increase biodiversity. Some areas are left completely wild - free from machinery and human intervention - to avoid compacting the soil and to protect delicate ecosystems.





## LAND & RIVER STEWARDSHIP

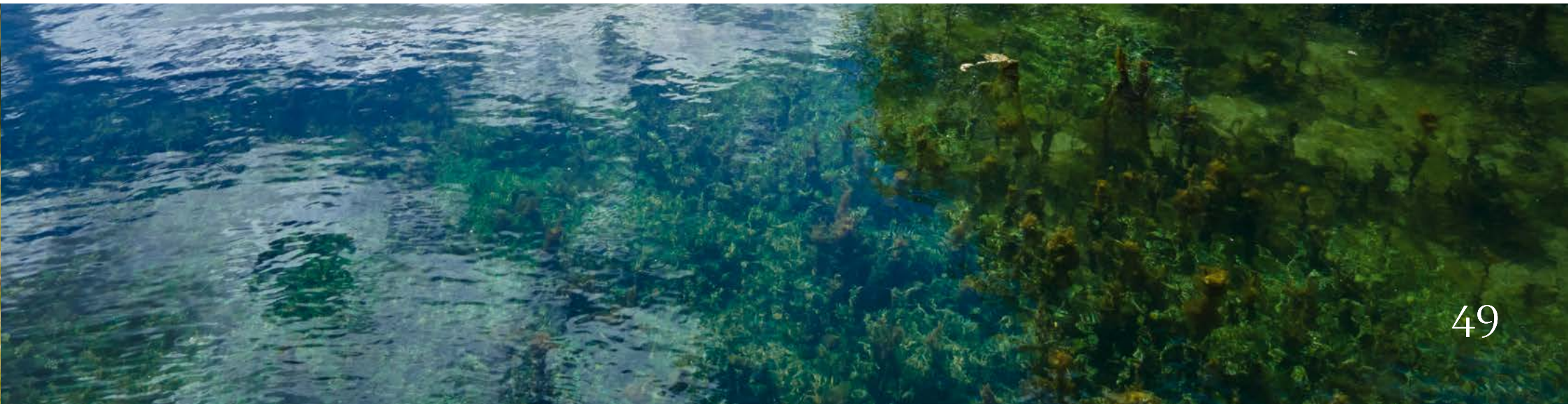
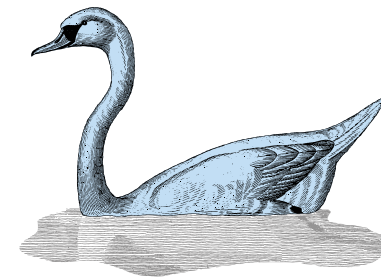
Pigs are used to naturally clear overgrown woodland. Their activity helps young saplings regenerate and encourages a healthy understorey of wild plants. Sheep and cattle graze our grasslands in a way that nurtures the soil and reduces the need for machinery.

This approach supports soil regeneration and biodiversity while lowering carbon emissions. Bridges have been built over the river to replace former fords. This helps to prevent riverbank erosion and protects the water quality, which is vital to the health of our river ecosystems.

Woodland glades have been created, opening the canopy to allow light in and encouraging a range of native plant species to flourish. These varied habitats support a rich diversity of wildlife.

## LOW IMPACT OPERATIONS

Electric machinery is used wherever possible, reducing emissions and minimising disturbance to wildlife and guests alike.







## READY TO ESCAPE?

Event Enquiries

[EVENTS@AVINGTON.COM](mailto:EVENTS@AVINGTON.COM)

012456 6428232

